

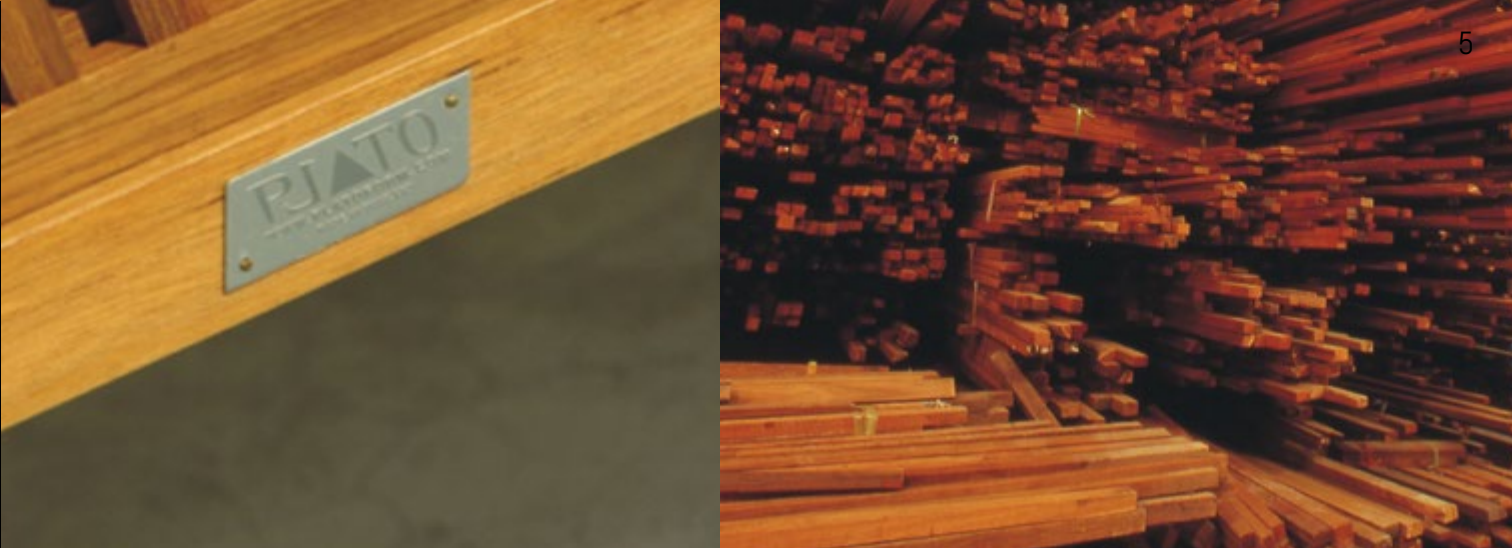
PJ TO
where the spirit of wood refined



OUTSIDEIN



CORPORATE PROFILE



Founded in 1989, B.P.S. Milcom Co., Ltd. has been a leading manufacturer of fine teak garden furniture, architectural woodwork and flooring in excess of ten years.

Prior to entry into Europe, the company has developed a loyal and satisfied customer base in United States market and Pacific Rim with well established quality confidence among buyer.

All teak or American hardwood lumbers used is **plantation grown, fully kiln dried** and manufactured to the highest quality specifications. The methods and specifications has received certification by the Forest Industry of Thailand.

To extend the strength of quality standards and our own unique designs to end-consumer, PLATO was established in 2004 as our own brand name offering modern to contemporary solid indoor and outdoor furniture.

collection directly through international dealers

Since we design, manufacture, and distribute in our own brand, we are able to employ highest quality materials plus most skillful craftsmen and yet sold at reasonable price.

At our 11,600m² production facilities in Lampang, northern of Thailand, over 100 experienced skilled artisans, various modern efficient kilns and woodworking machineries can fulfill any new customers' order within 4 - 6 weeks

Subsequently a successful launch in Thai local market with overwhelmingly acceptances and positive comments among consumers and leading design magazine Elle Decor, Casa Viva, Living Etc. and Wallpaper, PLATO is now confident and ready to launch its fine designed premium furniture

In addition, our in-house designers and technicians are promptly available to support and meet any extra requirements from customers in each country.

Capacity & Customer Advantages



MAKE YOUR OUTDOOR SPACE AS DELICATE AND COZY AS YOUR INDOOR IS: “OUTSIDE (IS) IN”

Embraces the concept which indoor and outdoor lifestyles merger together

OUTSIDEIN

Exterior furniture and decors reflect one's own identity and creativity in the same way that interior decors do. Hence the two can be fused to create a smooth flow between them. However, exterior furniture must be as durable as its beauty to withstand the cruel weather such as hot sun, heavy snow or storms.

SIMPLICITY is also “IN”

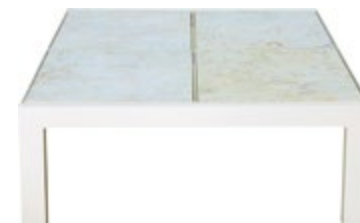
As the world has entered the “eco-chic” era, modern lifestyle is looking for a new for of sophistication; a balanced mix of clean but conceptual design with functional structure, natural materials and synthetic innovations like metal or fiberglass. At the same time, wooden furniture is most likely ever trendy with its subtle but refined look.



A STORYTELLER: OBJECTS WITH ROOTS OR STORIES HAVE MORE THAN ITS PHYSICAL APPEALS. THE AUTHENTICITY OF DESIGNS & CRAFTSMANSHIP ARE INSPIRING WARMING ONE'S SPIRIT.

Another upcoming drift is Asian-influenced aesthetic that has moved to the next level where traditional crafts are treated with fresh ideas. While inherited weaving style is a reflection of original culture and nature; by a modernized form, it verifies the existence of globalization era when the world is getting smaller and diversity is increasingly acknowledged.





ARIOSCO TORO
ARIOSCO COFFE TABLE
// see page 47





ARIOS COZY CHAIR
// see page 46

ARIOSO DINING SET
ARIOSO DINING TABLE
ARIOSO BENCH
// see page 46, 47



ARIOSO DINING SET
ARIOSO STOOL
ARIOSO BAR
ARIOSO CHAIR
// see page 46, 47, 48





ARIOSO DINING SET
ARIOSO STOOL
ARIOSO BAR
ARIOSO CHAIR
// see page 46, 48





X2 RESORT KUI BURI



X2 RESORT KUI BURI



FLO FOL
// see page 48





VIRANDA CHIANGMAI THE HIGH RESORT





COVER CROP
// see page 49



VIRANDA CHIANGMAI THE HIGH RESORT

COCO SET
COCO COZY CHAIR
COCO BABY
// see page 49





SUPRA SUNNY LOUNGER

0LO-05
82 x 200 x 28 cm



SAUTER SET
SAUTER COZY CHAIR
SAUTER SIDE TABLE
// see page 50



RUSTIC SET
 RUSTIC TABLE
 RUSTIC BENCH (LONE)
 RUSTIC BENCH (SHORT)
 // see page 54



FREEWAY DINING SET
FREEWAY TABLE
FREEWAY ARMCHAIR
FREEWAY BENCH

// see page 53



THE BORDERLINE BETWEEN RETRO
PAST AND PRESENT IS VANISHING -
ELEMENTS OF MULTIPLE STYLES,
MODERN, BAROQUE, CONTEMPORARY
ARE BLENDED TO CREATE ENTIRELY NEW
EXPERIENCE FROM OUR NOSTALGIA.

Modern simplicity denotes unchanging beauty and a clearness of form where harmony of nature and technology is created. Simple geometric forms found in all sorts of natural entity are accentuated. Linearity, angles and facets rearranged in fresh design give out familiar yet futuristic air.

XENOS DINING SET
XENOS TABLE
XENOS ARMCHAIR
// see page 52





XENOS ARMCHAIR

// see page 52



NEST CHAIR

// see page 52



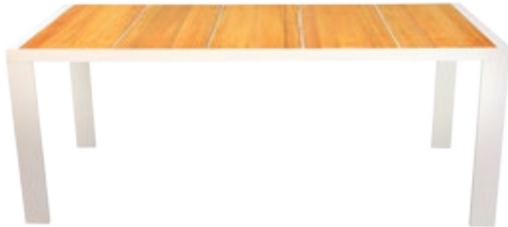
NAME	CODE	DESIGNER
ARIOSO BENCH	ARI-01	Gaspard
DIMENSION	37 x 155 x 45H (cm)	14.5 x 61 x 17.7H (in)
MATERIAL	GOLDEN TEAK (BLEACH 2 TIMES, TEAK OIL 2 TIMES) ALUMINIUM (OUTDOOR POWDER-COATED, WHITE) LAMPANG MARBLE	
DESCRIPTION	With clean design and pureness of materials, the simplicity of brownish Golden Teak and white Marble are the essence of this bench charm, a beauty that appears to the sense. Each panel can be selected or switched between Teak - Marble, enables it to be adaptable to various occasions.	



NAME	CODE	DESIGNER
ARIOSO BAR TABLE	ARI-02	Gaspard
DIMENSION	37 x 178 x 105H (cm)	14.5 x 62.2 x 41.3H (in)
MATERIAL	GOLDEN TEAK (BLEACH 2 TIMES, TEAK OIL 2 TIMES) ALUMINIUM (OUTDOOR POWDER-COATED, WHITE) LAMPANG MARBLE	
DESCRIPTION	Brings back the warm and cheerful air of summer, a glass of cool Pastis, and flavor of cheese when a party is taken place in a garden. Natural touch of the Ariosso Bar Table adds the jubilance among friends.	



NAME	CODE	DESIGNER
ARIOSO COZY CHAIR	ARI-03	Gaspard
DIMENSION	70 x 70 x 40-60H (cm)	27.5 x 27.5 x 15.7-23.6H (in)
MATERIAL	GOLDEN TEAK (BLEACH 2 TIMES, TEAK OIL 2 TIMES) ALUMINIUM (OUTDOOR POWDER-COATED, WHITE) LAMPANG MARBLE	
DESCRIPTION	An outdoor seat evolved from traditional folding chair system. Highly flexible for use in different conditions and decoration ambiances, as a merit of its design and materials. The backrest can be folded down behind the seat making it a stool or low table.	



NAME	CODE	DESIGNER
ARIOSO DINING TABLE	ARI-04	Gaspard
DIMENSION	85 x 192 x 75H (cm)	33.4 x 75.5 x 29.5H (in)
MATERIAL	GOLDEN TEAK (BLEACH 2 TIMES, TEAK OIL 2 TIMES) ALUMINIUM (OUTDOOR POWDER-COATED, WHITE) LAMPANG MARBLE	
DESCRIPTION	Wood and marble panels can be freely swapped to match the architecture and decoration style.	



NAME	CODE	DESIGNER
ARIOSO COFFEE TABLE	ARI-05	Gaspard
DIMENSION	77.5 x 77.5 x 30H (cm)	30.5 x 30.5 x 11.8H (in)
MATERIAL	GOLDEN TEAK (BLEACH 2 TIMES, TEAK OIL 2 TIMES) ALUMINIUM (OUTDOOR POWDER-COATED, WHITE)	
DESCRIPTION	Wood and marble panels can be freely swapped to match the architecture and decoration style.	



NAME	CODE	DESIGNER
ARIOSO COZY CHAIR	ARI-03	Gaspard
DIMENSION	240 x 240 x 247H (cm)	94.5 x 94.5 x 97.2H(in)
MATERIAL	GOLDEN TEAK (BLEACH 2 TIMES, TEAK OIL 2 TIMES) ALUMINIUM (OUTDOOR POWDER-COATED, WHITE) POLYESTER 100%	
DESCRIPTION	“Toro” is a traditional lantern in Japan. The Gazebo inspired by the Japanese paper lantern will keep you warm inside with all the four curtains down, while brighten up your garden like a giant lamp.	



NAME	CODE	DESIGNER
ARIOSO CHAIR	ARI-07	Gaspard
DIMENSION	55 x55 x 85H (cm)	21.6 x 21.6 x 334H (in)
MATERIAL	GOLDEN TEAK (BLEACH 2 TIMES, TEAK OIL 2 TIMES) STAINLESS STEEL (OUTDOOR POWDER-COATED, WHITE / POLISHED SANDBLAST)	
DESCRIPTION	Inspired by honeycomb structure, the angular, hexagonal shape gives a chic appearance yet softened by an especially-made outdoor cushion.	



NAME	CODE	DESIGNER
ARIOSO BAR STOOL	ARI-08	Gaspard
DIMENSION	55 x 55 x98H (cm)	21.6 x 21.6 x 38.6H (in)
MATERIAL	GOLDEN TEAK (BLEACH 2 TIMES, TEAK OIL 2 TIMES) STAINLESS STEEL (OUTDOOR POWDER-COATED, WHITE / POLISHED SANDBLAST)	
DESCRIPTION	Inspired by honeycomb structure, the angular, hexagonal shape gives a chic appearance yet softened by an especially-made outdoor cushion.	



NAME	CODE	DESIGNER
FLO-FOL	FG-01	Garan
DIMENSION	86 x 173 x 67H (cm)	33.8 x 68 x 26.3H (in)
MATERIAL	FIBER GLASS	
DESCRIPTION	With its boat material-lounger, you can comfortably lie down on and rest either n a terrace or even get floated in a pool.	



NAME	CODE	DESIGNER
COCO COZY CHAIR	CC-01	Gaspard
DIMENSION	110 x 86 x 70H (cm)	43.3 x 33.8 x 27.5H (in)
MATERIAL	SYNTHETIC RATTAN (BLACK / WHITE) METAL FRAME (E.D.P., OUTDOOR POWDER-COATED)	
DESCRIPTION	A new generation of the popular OASIS ISLAND. The white outdoor synthetic fiber is weaved in a special traditional pattern on the white metal mesh, giving a soft and comfort touch to the outdoor ambient.	

NAME	CODE	DESIGNER
COCO BABY	CC-02	Gaspard
DIMENSION	60 x 60 x 35H (cm)	23.6 x 23.6 x 13.8H (in)
MATERIAL	SYNTHETIC RATTAN (BLACK / WHITE) METAL FRAME (E.D.P., OUTDOOR POWDER-COATED)	
DESCRIPTION	A lightweight ottoman (or a coffee table) with Thai-styled wickerwork can be perfectly stored under the COCO COZY CHAIR seat and is super flexible for any usage. Its round, bubble-like form offers a cozy feeling to the ambient.	

NAME	CODE	DESIGNER
COVER CROP	CC-03	Decha
DIMENSION	100 x 180 x 53H (cm)	39.7 x 70.8 x 20.8H (in)
MATERIAL	SYNTHETIC RATTAN (BLACK / WHITE) METAL FRAME (E.D.P., OUTDOOR POWDER-COATED)	
DESCRIPTION	A beautiful craft pattern stretches over this lounger gives a soft touch to a modern design space. A long, sliding armrest is complimentary and can be a tray for your cocktail glass or favorite book.	



NAME	CODE	DESIGNER
SAUTER SIDE TABLE	SAU-01	Teerachet
DIMENSION	45 x 45 x 48H (cm)	17.7 x 17.7 x 18.9H (in)
MATERIAL	GOLDEN TEAK (TEAK OIL FINISHING)	
DESCRIPTION	Designed to compliment the SAUTER COZY CHAIR, yet stands out by itself while lovingly suits to any style of seating. Very light and portable.	



NAME	CODE	DESIGNER
ARIOSO BAR STOOL	ARI-08	Gaspard
DIMENSION	55 x 55 x 98H (cm)	21.6 x 21.6 x 38.6H (in)
MATERIAL	GOLDEN TEAK (TEAK OIL FINISHING)	
DESCRIPTION	Designed to compliment the SAUTER COZY CHAIR, yet stands out by itself while lovingly suits to any style of seating. Very light and portable.	



NAME	CODE	DESIGNER
FLO-FOL	FG-01	Garan
DIMENSION	86 x 173 x 67H (cm)	33.8 x 68 x 26.3H (in)
MATERIAL	FIBER GLASS	
DESCRIPTION	With its boat material-lounger, you can comfortably lie down on and rest either n a terrace or even get floated in a pool.	



NAME	CODE	DESIGNER
COCO COZY CHAIR	CC-01	Gaspard
DIMENSION	110 x 86 x 70H (cm)	43.3 x 33.8 x 27.5H (in)
MATERIAL	SYNTHETIC RATTAN (BLACK / WHITE) METAL FRAME (E.D.P., OUTDOOR POWDER-COATED)	
DESCRIPTION	Designed to compliment the SAUTER COZY CHAIR, yet stands out by itself while lovingly suits to any style of seating. Very light and portable.	



NAME	CODE	DESIGNER
COCO BABY	CC-02	Gaspard
DIMENSION	60 x 60 x 35H (cm)	23.6 x 23.6 x 13.8H (in)
MATERIAL	SYNTHETIC RATTAN (BLACK / WHITE) METAL FRAME (E.D.P., OUTDOOR POWDER-COATED)	
DESCRIPTION	Designed to compliment the SAUTER COZY CHAIR, yet stands out by itself while lovingly suits to any style of seating. Very light and portable.	



NAME	CODE	DESIGNER
COVER CROP	CC-03	Decha
DIMENSION	100 x 180 x 53H (cm)	39.7 x 70.8 x 20.8H (in)
MATERIAL	SYNTHETIC RATTAN (BLACK / WHITE) METAL FRAME (E.D.P., OUTDOOR POWDER-COATED)	
DESCRIPTION	Designed to compliment the SAUTER COZY CHAIR, yet stands out by itself while lovingly suits to any style of seating. Very light and portable.	



NAME	CODE	DESIGNER
XENOS DINING TABLE	XN-01	Gaspard
DIMENSION	100 x 240 x 75H (cm)	39.3 x 94.5 x 29.5H (in)
MATERIAL	GOLDEN TEAK + ROK FAH (WATER BASED FINISHING)	
DESCRIPTION	Golden teak color table is accentuated its loveliness by sleek darkness of the rare Rok Fah wood frame. The familiar crossed-leg structure affects you with nostalgia.	



NAME	CODE	DESIGNER
FREEWAY DINING TABLE	FWY-01	Teerachet
DIMENSION	90 x 180 x 75H (cm)	35.4 x 70.8 x 29.5H (in)
MATERIAL	GOLDEN TEAK / WHITE ASH (WATER BASED FINISHING)	
DESCRIPTION	A bird's-eye view of a highway is re-depicted as the table's legs which smoothly connect with its frame. The smooth simplicity of its form gives subtle yet refined look, a good combination of formal and cozy style.	



NAME	CODE	DESIGNER
XENOS ARMCHAIR	XN-02	Gaspard
DIMENSION	64 x 55 x 85H (cm)	25 x 21.6 x 33.4H (in)
MATERIAL	GOLDEN TEAK + ROK FAH (WATER BASED FINISHING FOR INDOOR) GOLDEN TEAK + ROK FAH (OIL BASED FINISHING FOR OUTDOOR)	
DESCRIPTION	If the XENOS DINING TABLE is masculine, this chair is designed to create a balance with its exquisite feminine look.	



NAME	CODE	DESIGNER
FREEWAT DINING CHAIR	FWY-02	Teerachet
DIMENSION	50 x 48 x 80H (cm)	19.6 x 18.9 x 31.5H (in)
MATERIAL	GOLDEN TEAK / WHITE ASH (WATER BASED FINISHING)	
DESCRIPTION	A chair with soft lines and splendor form, perfectly matched with the table and easily go with any dining tables or desks. Three shades of colors can be chosen for a whole group of chairs or even individually selected for each piece to make the collection more dashing.	



NAME	CODE	DESIGNER
NEST CHAIR	NES-01	Gaspard
DIMENSION	45 x 51 x 82H (cm)	17.7 x 20.1 x 32.3H (in)
MATERIAL	GOLDEN TEAK + WHITE ASH (WATER BASED FINISHING) STEEL (OUTDOOR POWDER-COATED, BLACK OR NICKEL HAIRLINE FINISHING)	
DESCRIPTION	Born by an urge to escape from a boundary of common chair surface and form, a multicolor of Teak & Ash interwoven created a refreshing material layer with vivaciously brightens up the interior.	



NAME	CODE	DESIGNER
FREEWAY BENCH	FWY-03	Teerachet
DIMENSION	38 x 160 x 45H (cm)	14.9 x 63 x 17.7H (in)
MATERIAL	GOLDEN TEAK / WHITE ASH (WATER BASED FINISHING)	
DESCRIPTION	A bench with soft lines perfectly matched with the table and easily go with any dining tables or desks. Three shades of colors can be chosen.	



NAME	CODE	DESIGNER
RUSTIC TABLE	RUS-01	BT
DIMENSION	100 x 180 x 73H (cm)	39.3 x 70.8 x 28.7H (in)
MATERIAL	GOLDEN TEAK (TEAK OIL FINISHING)	



NAME	CODE	DESIGNER
RUSTIC LONG BENCH	RUS-02-L	BT
DIMENSION	45 x 160 x 45H (cm)	17.7 x 62.9 x 17.7H (in)
MATERIAL	GOLDEN TEAK (TEAK OIL FINISHING)	



NAME	CODE	DESIGNER
RUSTIC SHORT BENCH	RUS-02-S	BT
DIMENSION	45 x 80 x 45H (cm)	17.7 x 31.4 x 17.7H (in)
MATERIAL	GOLDEN TEAK (TEAK OIL FINISHING)	

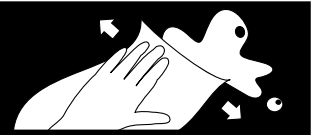
TEAK CARE 101

FOR OUTDOOR USE

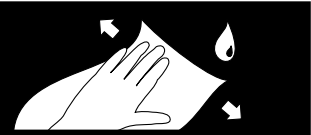
Teak (Tectona Grandis) is an excellent wood species commonly used in exposed locations or whenever weather resistance is desire due to its immunity to various types of element, severe climatic conditions, moulds, fungi, and insects. The secrets of this wonder come from special chemical in Teak called Tectoquione, and its natural preservation oil content.

Normal Care

Teak is virtually maintenance-free. But to keep your teak furniture look great, a few cleaning cares should be taken as follows;



If furniture is spilled with any chemical compounds, immediately use a clean dried cloth to wipe it out.



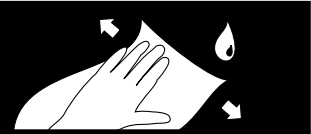
Weekly or daily (should you prefer) clean it using a slightly damp cloth just to wipe out any accumulated dust or dirt.

Deep Cleaning

For those stubborn, heavily in grained stains such as wine, grease or to restore the golden color from the grey oxidized surface;



Treat the furniture with commercial solutions, degreasing agent **specially design for Teak care. Follow the instructions labeled on the product.**



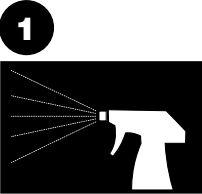
Weekly or daily (should you prefer) clean it using a slightly damp cloth just to wipe out any accumulated dust or dirt.

No other wood species can be naturally impervious to the effects of sun, rain, snow, low-high humidity and even numerous chemical reagents including acid like Teak.

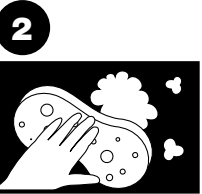
If left untreated outdoor furniture for an extended period of several months, teak will age itself into a brilliant magnificent silver-grey color due to oxidation. Although no maintenance routine is required to extend the life of Teak furniture, it can be cleaned and applied with teak-oil once in a while to enhance the golden brown tint if the silver-grey is not preferred.

Periodic Cleaning

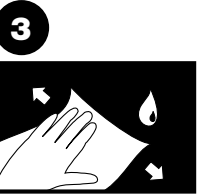
Might be done once in a year to remove more persistent stains



Spray the furniture with fresh water using low-middle pressure hose.



Scrub it using mildly soapy water / gentle cleaner and a soft brush or sponge as needed.



Rinse the piece with clean water to remove the cleaning solution.

DO NOT USE BRASS BRUSH OR STEEL WOOL ON TEAK FURNITURE. THE USE OF BLEACH IS HIGHLY NOT RECOMMENDED.

AVOID USING THE ACID-BASED CLEANER AS IT DETERIORATE TEAK SURFACE.

SHOULD YOU NEED TO RE-APPLY TEAK OIL, MAKE SURE TO SAND THE SURFACE WITH 50 GRIT SANDPAPER IN THE DIRECTION OF WOOD GRAIN BEFORE CLEANING.

LEAVE THE FURNITURE TO COMPLETELY DRY BEFORE APPLYING THE COATING IN THE LAST STEP

STAINLESS CARE 101

THERE ARE TWO COMMONLY USED GRADES OF STAINLESS STEEL

304

Industry-standard and often selected for regular conditions. Not recommended to use near ocean as the surface is susceptible to aesthetic deterioration by the effects of salt air.

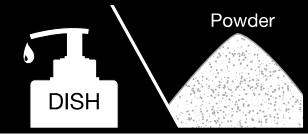
316

Highly resistant to corrosion and hence more appropriate for marine and coastal environments.

Normal Care



Weekly or daily (should you prefer) clean it using a slightly damp cloth just to wipe out any accumulated dust or dirt.



Scrub it using dishwashing liquid water for hairline finishing or powder to remove grease / oil stains for polished finishing.

Remove/Repair minor scratches



FOR HAIRLINE FINISHING

The advantage of this finishing is that the grain is continuous and runs the length of the sheet, allowing for repair of minor scratches. Simply us fine grit (80-120) abrasive pads or sandpaper to sand the length of the grain until the scratches are removed.

FOR POLISHED (MIRROR) FINISHING

Restoring this kind of finishing to its original appearance requires a professional such as a company that specialized in fabricating or polishing stainless steel.

PLATO FAVORITES

LOCATION CATEGORY



X2 KUIBURI

52 Moo 13, Ao Noi sub-district, Muang district
Prachuap Khiri Khan 77210 Thailand
Tel: +662 686 8201 Fax: +662 696 8202
www.x2resorts.com



VERANDA CHIANGMAI HIGH RESORT

192 Moo 2 Banpong, Hangdong
Chiang-Mai 50230 Thailand
Tel: +66 53 365 007 Fax: +66 53 365 362
www.verandaresortandspa.com



www.platoform.com

Flagship Store

Siam Paragon 3rd Fl., Unit 330-331
Rama1 Rd., Pathumwan,
Bangkok 10330 Thailand

T +66 2 129 4512
F +66 2 129 4510
E paragon@platoform.com
H mon - sun / 10am - 8pm

Store & Interior Center

Crystal Design Center (CDC)
1st Fl., Building C, Unit 107-108
Praditmanutham Rd., Klongjun
Bangkok 10240, Thailand

T +66 2 102 2046
F +66 2 102 2047
E cdc@platoform.com
H mon - sun / 10am - 8pm

Head Office

14th Fl., Silom Center building
2 Silom Rd., Suriyawong
Bangkok, 10500 Thailand

T +66 2 235 8260
F +66 2 236 5850
E plato@platoform.com
H mon - sat / 10am - 6pm